

Every mail piece touched by software for the ultimate in accuracy and control.

DP240B

The only production speed, batch mailing machine available with Shape-Based compliance built in.

DP240B

Speeds up to 240 letters-per-minute

Handles letter and portrait mail up to 10x13" flats, and up to 1/2" thick

HP 45A technology for the lowest ink-jet mail printing costs in the industry

All-steel construction and stainless steel ball bearings like the very best mailing inserters

New industry regulations? Our off-the-shelf Dell PC with 15" color touch-screen lets you adapt immediately



## Exclusive! Full accounting is standard.

Complete accounting by job, account, class, operator and unit is included — at no additional cost — with each mailing machine. Plus, pre-sort reporting by weight, rate, account and job! Upgrades are provided as they become available.

Want more? Postage can be set on the operator's mailing machine direct from the web via your manager's high-speed PC using Data-Pac's eSmart Mail Manager software.

And, multiple mail permits can be printed on demand for even more convenience and economies.

PRESORTED FIRST CLASS  US POSTAGE \$00.29<sup>3</sup>  
APR 14 2008  
ZIP 14580  
0801 1458019

WEBSTER  
NY 14580  
APR 14 2008

MAILER'S PERMIT  
000

FIRST-CLASS MAIL  
U.S. POSTAGE PAID  
NEW YORK, NY  
PERMIT NO. 1



PRESORTED STANDARD  
AUTOOCR  
U.S. POSTAGE PAID  
PERMIT NO. 1



We fit into your world so  
you don't have to fit into ours.

# Data Pac's complete postage management software.

Every mail piece touched by software for the ultimate in accuracy and control.

Data-Pac's proprietary, mail-processing software solutions are built into every one of our mailing systems at no extra cost. The bonus? They can also be connected to most mailing systems from competitive manufacturers.

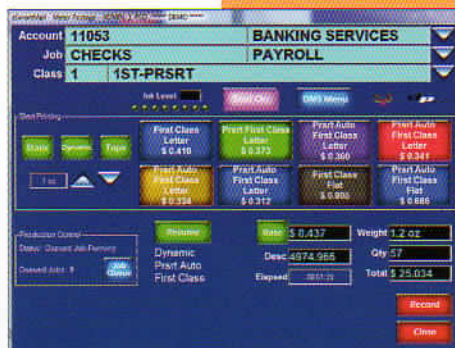
## Software

### eSMART-MAIL

Advanced, postage-accounting software offering user-configurable screens and four-level accounting including job class and operator reporting.

Can also control, collect, and report accounting data for Hasler, Neopost and PB mailing systems.

And, it is host for the AMERICA2 Postage Meter.



### eSMART-MAIL Manager

Provides production control, postage accounting, and allows the operator to load your mailing machine with postage right from your desktop. It offers manual entry and editing, SQL or Access database, exports to in-house systems, and imports from standard shipping stations with real-time data consolidation. Consolidates data from all eSMART-MAIL applications and multiple units... across the room, across the street, or across the nation, eSMART-MAIL MANAGER keeps you connected.



### USHIPSAVER

An optional software application that turns your Data-Pac mailing system into a multi-carrier processing tool capable of handling not only USPS but also UPS packages while shopping for the best rate between the two carriers. The 15" color, touch-screen is easy to use and easy to read.



We fit into your world so you don't have to fit into ours.